



## CONSUMER PRICE INDEX—DECEMBER QUARTER 1982

**PHONE INQUIRIES** *for more information about these statistics*—contact Mr Trevor Travers on Canberra (062) 52 6251 or any of our State offices.

*other inquiries including copies of publications*—contact Information Services on Canberra (062) 52 6627 or in any of our State offices.

**MAIL INQUIRIES** *write to* Information Services, ABS, P.O. Box 10, Belconnen, A.C.T. 2616 or any of our State offices.

### MAIN FEATURES

**Note:** This issue includes for the first time information on the impact on the CPI of changes in selected State and local government charges. See explanatory notes, paragraphs 11, 12 and 14; Tables 3 and 7; and the Appendix.

	Change between	
	Sept. qtr 1982 and Dec. qtr 1982 %	Dec. qtr 1981 and Dec. qtr 1982 %
<b>All groups index</b>		
Sydney	+3.1	+11.9
Melbourne	+2.5	+10.2
Brisbane	+3.3	+10.7
Adelaide	+2.7	+10.7
Perth	+2.7	+9.5
Hobart	+3.5	+10.3
Canberra	+3.9	+12.1
Darwin	+2.8	+9.7
Weighted average of eight capital cities	+3.0	+11.0

Main price changes between September quarter 1982 and December quarter 1982 were as follows:

#### Food

Prices of meals out and take-away food increased in all cities.  
Prices of soft drinks, ice cream and confectionery increased in all cities.  
Prices of meat and seafoods increased in all cities.  
Milk prices increased in all cities except Melbourne and Hobart.  
Bread prices increased in all cities except Sydney and Canberra.

#### Clothing

Prices increased for women's and men's summer seasonal clothing.  
Prices of footwear increased in all cities.

#### Housing

Local government rates and charges increased in all cities.  
House prices increased in all cities.  
Private dwelling rents increased in all cities.  
Government dwelling rents increased in Melbourne, Brisbane and Hobart.

#### Household equipment and operation

Electricity charges increased in Sydney, Melbourne, Adelaide, Hobart and Canberra.  
Prices of household supplies and services increased in all cities.  
Furniture and floorcovering prices increased in all cities.  
Telephone charges increased in all cities.  
Gas charges increased in Melbourne, Brisbane, Adelaide, Perth and Canberra.

#### Transportation

Urban rail and bus fares increased in Sydney, Brisbane and Hobart.  
Motor vehicle servicing and repair charges increased in all cities.  
Motor vehicle insurance charges increased in all cities.  
Petrol prices increased in Sydney, Brisbane, Adelaide, Hobart, Canberra and Darwin; prices fell in Melbourne.

#### Tobacco and alcohol

Prices of alcoholic beverages increased in all cities.  
Cigarette prices increased in all cities.

#### Health and personal care

Health insurance charges increased in all cities.  
Doctors' charges increased in all cities.  
Prices of personal care products increased in all cities.

#### Recreation and education

Holiday travel and accommodation charges increased for all cities.  
Entertainment charges increased in all cities.  
Prices of newspapers and magazines increased in all cities.

**R. J. CAMERON**  
Australian Statistician

## EXPLANATORY NOTES

**Brief description of the CPI**

1. The CPI measures quarterly changes in the price of a 'basket' of goods and services which account for a high proportion of expenditures by metropolitan wage and salary earner households. This 'basket' covers a wide range of goods and services, arranged in the following eight groups: food; clothing; housing; household equipment and operation; transportation; tobacco and alcohol; health and personal care; and recreation and education. Each group is in turn divided into sub-groups. Index numbers at the *group* and *All Groups* levels are published for each State capital city, Canberra, Darwin, and for the weighted average of eight capital cities. Index numbers for *All Groups* are also published for the weighted average of six State capital cities. *Subgroup index numbers* are published for the weighted average of eight capital cities.

2. It is important to note that the capital city indexes measure price movements over time *in each city individually*. They do *not* measure differences in retail price levels *between* cities.

3. A major review of the CPI was recently completed and its results incorporated in the tenth CPI series introduced in the June quarter 1982 issue of this publication. Details of the review are contained in *ABS Information Paper: Review of the Consumer Price Index (6450.0)*.

4. Further information about the CPI is contained in a booklet entitled *A Guide to the Consumer Price Index (6440.0)* which is available from the ABS on request.

**Prices**

5. Prices of goods and services included in the CPI are generally collected quarterly. However, some important items are priced monthly or more frequently (e.g. bread, fresh meat and fish, fresh fruit and vegetables, petrol, alcohol and tobacco) and a small number annually (e.g. seasonal clothing, local government rates and charges).

6. The bulk of items for which prices are collected quarterly are priced at the middle of the mid-month of the quarter (i.e. in August, November, February and May), but, to facilitate a more even spread of the field collection workload, some goods and services are priced in the first and third months of each quarter. Items priced in the third month are generally those subject to price changes at discrete points of time (e.g. electricity and postal charges, milk); in these cases information is obtained of any changes in price during the quarter so that a weighted average price for the whole quarter can be calculated.

7. As a result of the recent review of the CPI it was decided to discontinue the collection of most food prices monthly; as a consequence, the monthly food group index numbers are no longer compiled.

**Weighting pattern**

8. There are 105 *expenditure classes* (that is, groupings of like items) in the tenth series CPI and each expenditure class has its own weight, or measure of relative importance. In calculating the index, price changes for the various expenditure classes are combined using these weights.

9. Changes in the weighting pattern have been made at approximately five-yearly intervals to take account of changes in household spending patterns. The CPI now comprises ten series of price indexes which have been linked to form a continuous series. The tenth series (that is, the current series), which was introduced in the June quarter 1982, has a weighting pattern based, in general, on estimated household expenditure in 1979-80.

**Index points and percentage changes**

10. Movements in indexes from one period to another can be expressed either as percentage changes, or as changes in 'index points'. The difference between these two methods of describing movements in indexes is shown by the following example:

*All Groups CPI: Weighted average of eight capital cities*

*Index numbers:*

December quarter 1982:	122.0
Less: September quarter 1982:	118.5
Change in index points:	+3.5

$$\text{Percentage change} = \frac{+3.5}{118.5} \times 100 = +3.0\%$$

The index number of 122.0 for December quarter 1982 indicates an increase of 22.0% since the reference base year (1980-81).

11. Most of the tables in this publication show index numbers or percentage changes calculated from index numbers. However, Table 3 shows the main changes between September quarter 1982 and December quarter 1982, in terms of *All Groups index points*, for each capital city. In this issue, Table 3 shows for the first time the impact on the CPI of changes in selected State and local government charges.

**Special tables**

12. Table 7 provides a *detailed analysis*, for the weighted average of eight capital cities, of movements in the CPI since the previous quarter, including information on movements for subgroups and for some special series. It also shows the *contribution* which each group and subgroup makes to the total CPI. For instance, the dairy produce subgroup contributed 2.46 index points to the total All Groups index number of 122.0 for December quarter 1982. The final column shows contributions to the *change in All Groups index points* by each group and subgroup. In this issue, Table 7 includes, for the first time, special groupings for '*Selected State and local government charges*' and for '*All Groups excluding selected State and local government charges*'.

13. The All Groups index includes the effects of changes in prices for hospital and medical services. To facilitate analysis of trends in retail prices without the effects of these changes, Table 5 shows percentage changes for a special series *All Groups excluding hospital and medical services*, and compares these with changes in the All Groups index.

**State and local government charges**

14. This issue contains information on the impact on the CPI of changes in selected State and local government charges. This information will be included in Tables 3 and 7 each quarter in future. The Appendix (pages 10-13) explains the derivation of these figures and draws attention to some limitations and problems of comparability; it also includes tables containing data for previous periods.

**Symbols and other usages**

- nil or rounded to zero
- .. not available

NOTE. Any discrepancies between totals and sums of components in this publication are due to rounding. For similar reasons quarterly movements shown by subgroup or group index numbers in Table 7 do not necessarily correspond exactly with those shown by the relevant index points.



CATALOGUE NO. 6401.0

### CORRIGENDUM

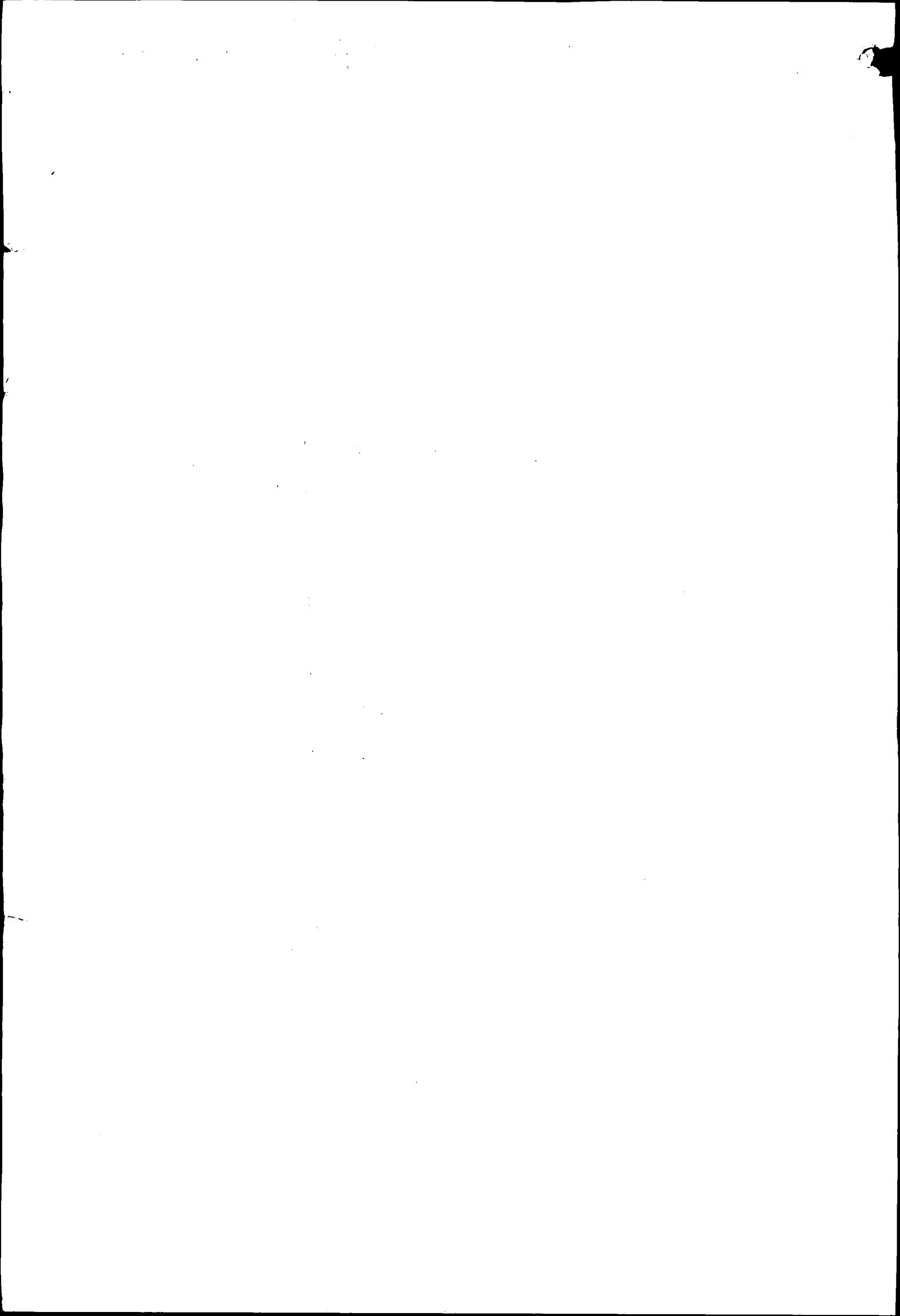
#### CONSUMER PRICE INDEX—DECEMBER QUARTER 1982

In table 3 of the above publication the descriptions relating to the last two lines of figures are printed incorrectly. These lines should have been printed as follows:

Contribution of selected State and local government charges (a) to total change—										
Index points	+0.47	+0.58	+0.47	+0.26	+0.49	+0.25	+0.52	+0.85	+0.21	+0.47
Proportion of total change (%)	+13.8	+15.7	+15.7	+6.7	+15.3	+7.8	+12.7	+18.5	+6.4	+13.4

(a) Selected charges comprise: government-owned dwelling rents; water and sewerage rates; council property rates and charges; electricity prices; gas prices (Melbourne and Perth only); motor vehicle third party insurance premiums (except Canberra); motor vehicle registration fees; drivers' licence fees; urban bus fares (government fares only in Sydney and Melbourne, council fares only in Brisbane); urban rail and tram fares (not applicable in Hobart, Canberra and Darwin); and public hospital charges (not applicable in Brisbane).

**R. J. CAMERON**  
Australian Statistician



**TABLE 1. CONSUMER PRICE INDEX : ALL GROUPS  
INDEX NUMBERS**  
(Base of each index: Year 1980-81 = 100.0)

	<i>Weighted average of six State capital cities</i>	<i>Sydney</i>	<i>Melbourne</i>	<i>Brisbane</i>	<i>Adelaide</i>	<i>Perth</i>	<i>Hobart</i>	<i>Canberra</i>	<i>Darwin</i>	<i>Weighted average of eight capital cities</i>
1978-79	83.0	82.4	83.1	83.4	83.2	84.1	83.1	82.3	..	..
1979-80	91.4	91.1	91.4	91.5	91.6	91.9	91.6	91.1	..	..
1980-81	100.0	100.0	100.0	100.0	100.0	100.0	100.0	100.0	100.0	100.0
1981-82	110.4	110.2	110.4	110.7	110.5	111.2	110.0	110.7	111.1	110.4
<i>Quarter—</i>										
<i>1978-79—</i>										
December	82.2	81.5	82.1	83.3	82.3	83.4	82.1	81.4	..	..
March	83.6	83.1	83.6	83.8	83.7	84.5	83.9	82.9	..	..
June	85.8	85.5	85.8	85.7	85.9	86.8	86.1	85.4	..	..
<i>1979-80—</i>										
September	87.8	87.4	88.1	87.7	87.6	88.3	88.2	87.6	..	..
December	90.4	89.9	90.5	90.4	90.9	91.3	90.7	89.9	..	..
March	92.4	92.3	92.1	92.8	92.6	92.9	92.6	92.2	..	..
June	95.0	94.9	94.9	95.0	95.3	95.2	94.8	94.8	..	..
<i>1980-81—</i>										
September	96.8	96.6	96.8	96.6	96.6	97.4	97.0	96.6	96.9	96.8
December	98.8	98.7	98.8	98.8	98.5	98.8	98.7	98.9	99.2	98.8
March	101.1	101.3	101.0	100.9	101.2	100.8	101.0	100.9	101.0	101.1
June	103.4	103.3	103.3	103.6	103.7	103.0	103.2	103.6	102.9	103.4
<i>1981-82—</i>										
September	105.5	105.1	105.5	106.0	105.8	106.5	105.7	105.7	105.0	105.5
December	109.9	109.4	110.1	110.1	110.0	111.2	109.7	110.0	111.3	109.9
March	111.8	111.5	111.6	112.5	111.7	112.4	111.3	111.8	113.0	111.8
June	114.5	114.6	114.3	114.1	114.4	114.6	113.4	115.2	115.0	114.5
<i>1982-83—</i>										
September	118.5	118.7	118.3	118.0	118.6	118.6	116.9	118.7	118.8	118.5
December	121.9	122.4	121.3	121.9	121.8	121.8	121.0	123.3	122.1	122.0

**TABLE 2. CONSUMER PRICE INDEX : ALL GROUPS  
PERCENTAGE CHANGES**

	<i>Weighted average of six State capital cities</i>	<i>Sydney</i>	<i>Melbourne</i>	<i>Brisbane</i>	<i>Adelaide</i>	<i>Perth</i>	<i>Hobart</i>	<i>Canberra</i>	<i>Darwin</i>	<i>Weighted average of eight capital cities</i>
	%	%	%	%	%	%	%	%	%	%
<i>Change from previous year</i>										
1979-80	+10.1	+10.6	+10.0	+9.7	+10.1	+9.3	+10.2	+10.7	..	..
1980-81	+9.4	+9.8	+9.4	+9.3	+9.2	+8.8	+9.2	+9.8	..	..
1981-82	+10.4	+10.2	+10.4	+10.7	+10.5	+11.2	+10.0	+10.7	+11.1	+10.4
<i>Change from corresponding quarter of previous year</i>										
<i>1980-81—</i>										
December	+9.3	+9.8	+9.2	+9.3	+8.4	+8.2	+8.8	+10.0	..	..
March	+9.4	+9.8	+9.7	+8.7	+9.3	+8.5	+9.1	+9.4	..	..
June	+8.8	+8.9	+8.9	+9.1	+8.8	+8.2	+8.9	+9.3	..	..
<i>1981-82—</i>										
September	+9.0	+8.8	+9.0	+9.7	+9.5	+9.3	+9.0	+9.4	+8.4	+9.0
December	+11.2	+10.8	+11.4	+11.4	+11.7	+12.6	+11.1	+11.2	+12.2	+11.2
March	+10.6	+10.1	+10.5	+11.5	+10.4	+11.5	+10.2	+10.8	+11.9	+10.6
June	+10.7	+10.9	+10.6	+10.1	+10.3	+11.3	+9.9	+11.2	+11.8	+10.7
<i>1982-83—</i>										
September	+12.3	+12.9	+12.1	+11.3	+12.1	+11.4	+10.6	+12.3	+13.1	+12.3
December	+10.9	+11.9	+10.2	+10.7	+10.7	+9.5	+10.3	+12.1	+9.7	+11.0
<i>Change from previous quarter</i>										
<i>1980-81—</i>										
December	+2.1	+2.2	+2.1	+2.3	+2.0	+1.4	+1.8	+2.4	+2.4	+2.1
March	+2.3	+2.6	+2.2	+2.1	+2.7	+2.0	+2.3	+2.0	+1.8	+2.3
June	+2.3	+2.0	+2.3	+2.7	+2.5	+2.2	+2.2	+2.7	+1.9	+2.3
<i>1981-82—</i>										
September	+2.0	+1.7	+2.1	+2.3	+2.0	+3.4	+2.4	+2.0	+2.0	+2.0
December	+4.2	+4.1	+4.4	+3.9	+4.0	+4.4	+3.8	+4.1	+6.0	+4.2
March	+1.7	+1.9	+1.4	+2.2	+1.5	+1.1	+1.5	+1.6	+1.5	+1.7
June	+2.4	+2.8	+2.4	+1.4	+2.4	+2.0	+1.9	+3.0	+1.8	+2.4
<i>1982-83—</i>										
September	+3.5	+3.6	+3.5	+3.4	+3.7	+3.5	+3.1	+3.0	+3.3	+3.5
December	+2.9	+3.1	+2.5	+3.3	+2.7	+2.7	+3.5	+3.9	+2.8	+3.0

**TABLE 3. CONSUMER PRICE INDEX**  
**CHANGE BETWEEN SEPTEMBER QUARTER 1982 AND DECEMBER QUARTER 1982 IN TERMS OF ALL GROUPS INDEX POINTS**

	<i>Weighted average of six State capital cities</i>	<i>Sydney</i>	<i>Melbourne</i>	<i>Brisbane</i>	<i>Adelaide</i>	<i>Perth</i>	<i>Hobart</i>	<i>Canberra</i>	<i>Darwin</i>	<i>Weighted average of eight capital cities</i>
<b>Food</b>										
Meals out and take-away food	+0.13	+0.13	+0.12	+0.21	+0.11	+0.14	+0.09	+0.10	—	+0.13
Soft drinks, ice cream and confectionery	+0.13	+0.13	+0.11	+0.12	+0.18	+0.13	+0.15	+0.12	+0.24	+0.13
Meat and seafood	+0.10	+0.08	+0.14	+0.20	+0.09	+0.01	+0.06	+0.17	+0.28	+0.11
Dairy produce	+0.06	+0.07	+0.04	+0.11	+0.07	+0.05	+0.03	+0.06	+0.10	+0.06
Cereal products	+0.05	+0.05	+0.07	+0.05	+0.06	+0.07	+0.02	+0.02	+0.06	+0.06
Other	+0.14	+0.02	+0.17	+0.15	+0.06	+0.32	+0.32	+0.26	+0.25	+0.12
<b>Clothing</b>										
Men's and boys' clothing	+0.07	+0.08	+0.06	+0.06	+0.09	+0.11	+0.04	+0.03	+0.06	+0.07
Women's and girls' clothing	+0.06	+0.06	+0.05	+0.06	+0.07	+0.10	+0.07	+0.05	+0.06	+0.06
Footwear	+0.04	+0.03	+0.05	+0.03	+0.05	+0.02	+0.02	+0.03	+0.01	+0.03
Other	+0.02	+0.03	+0.03	+0.02	+0.03	+0.04	+0.04	+0.04	—	+0.02
<b>Housing</b>										
Local government rates	+0.16	+0.18	+0.12	+0.15	+0.26	+0.23	+0.23	+0.30	+0.21	+0.17
Other home ownership	+0.17	+0.09	+0.17	+0.28	+0.26	+0.24	+0.17	+0.03	+0.08	+0.16
Rent-privately owned dwellings	+0.10	+0.09	+0.12	+0.11	+0.09	+0.04	+0.07	+0.03	+0.03	+0.09
Rent-government owned dwellings	+0.03	—	+0.06	+0.01	—	—	+0.05	—	-0.01	+0.02
<b>Household equipment and operation</b>										
Electricity	+0.16	+0.26	+0.15	—	+0.23	—	+0.08	+0.44	—	+0.17
Household supplies and services	+0.15	+0.13	+0.16	+0.22	+0.11	+0.19	+0.11	+0.11	+0.15	+0.15
Furniture	+0.08	+0.07	+0.13	+0.05	+0.05	+0.01	+0.10	+0.06	+0.03	+0.07
Telephone charges	+0.06	+0.05	+0.06	+0.05	+0.06	+0.06	+0.05	+0.04	+0.04	+0.06
Household utensils and tools	+0.06	+0.08	+0.06	+0.03	+0.05	+0.08	+0.04	+0.10	+0.03	+0.07
Gas	+0.05	—	+0.14	+0.02	+0.06	+0.01	—	+0.01	..	+0.05
Other	+0.05	+0.03	+0.05	+0.07	+0.07	+0.05	+0.05	+0.09	+0.01	+0.04
<b>Transportation</b>										
Urban transport fares	+0.08	+0.16	+0.01	+0.16	+0.01	+0.01	+0.04	+0.01	—	+0.07
Motor vehicle service, repairs, parts	+0.07	+0.07	+0.07	+0.07	+0.10	+0.09	+0.04	+0.10	+0.10	+0.07
Motor vehicle insurance	+0.06	+0.08	+0.03	+0.01	+0.05	+0.07	+0.07	+0.11	+0.02	+0.06
Automotive fuel	-0.01	+0.09	-0.23	+0.10	+0.18	—	+0.33	+0.38	+0.19	+0.01
Other	+0.02	+0.01	+0.02	+0.07	+0.08	+0.07	+0.02	+0.12	—	+0.04
<b>Tobacco and alcohol</b>										
Beer	+0.27	+0.32	+0.25	+0.26	+0.13	+0.30	+0.29	+0.30	+0.38	+0.27
Cigarettes and tobacco	+0.21	+0.20	+0.21	+0.19	+0.21	+0.19	+0.22	+0.16	+0.22	+0.21
Wine and spirits	+0.05	+0.07	+0.02	+0.02	+0.04	+0.04	+0.03	+0.06	+0.03	+0.04
<b>Health and personal care</b>										
Hospital and medical services	+0.40	+0.71	+0.12	+0.58	+0.07	+0.18	+0.54	+0.63	+0.27	+0.40
Personal care products	+0.10	+0.11	+0.09	+0.10	+0.07	+0.11	+0.08	+0.09	+0.03	+0.09
Other	+0.02	—	+0.01	+0.03	+0.02	+0.02	+0.07	+0.02	+0.01	+0.02
<b>Recreation and education</b>										
Holiday travel and accommodation	+0.21	+0.18	+0.24	+0.25	+0.11	+0.19	+0.40	+0.18	+0.25	+0.20
Entertainment	+0.05	+0.01	+0.07	+0.06	+0.06	+0.13	+0.01	+0.07	+0.05	+0.05
Books, newspapers, magazines	+0.04	+0.07	+0.04	+0.02	+0.01	+0.04	+0.01	+0.09	—	+0.05
Other	-0.01	-0.01	+0.03	-0.02	+0.01	-0.05	+0.13	+0.11	+0.07	+0.01
<b>Total change</b>	<b>+3.4</b>	<b>+3.7</b>	<b>+3.0</b>	<b>+3.9</b>	<b>+3.2</b>	<b>+3.2</b>	<b>+4.1</b>	<b>+4.6</b>	<b>+3.3</b>	<b>+3.5</b>
Contribution of selected State and local government charges (a) to total change	+0.47	+0.58	+0.47	+0.26	+0.49	+0.25	+0.52	+0.85	+0.21	+0.47
Index points Proportion of total change (%)	+13.8	+15.7	+15.7	+6.7	+15.3	+7.8	+12.7	+18.5	+6.4	+13.4

(a) Selected charges comprise: government-owned dwelling rents; water and sewerage rates; council property rates and charges; electricity prices; gas prices (Melbourne and Perth only); motor vehicle third party insurance premiums (except Canberra); motor vehicle registration fees; drivers' licence fees; urban bus fares (government fares only in Sydney and Melbourne, council fares only in Brisbane); urban rail and tram fares (not applicable in Hobart, Canberra and Darwin); and public hospital charges (not applicable in Brisbane).

**TABLE 4. CONSUMER PRICE INDEX : GROUP INDEXES : WEIGHTED AVERAGE OF EIGHT CAPITAL CITIES:  
PERCENTAGE CHANGES**

	<i>Food</i>	<i>Clothing</i>	<i>Housing</i>	<i>Household equipment and operation</i>	<i>Trans- portation</i>	<i>Tobacco and alcohol</i>	<i>Health and personal care (a)</i>	<i>Recreation and education</i>	<i>All Groups (a)</i>
	%	%	%	%	%	%	%	%	%
<i>Change from previous year</i>									
1981-82	+8.6	+7.1	+11.1	+10.6	+10.3	+9.2	+24.2	..	+10.4
<i>Change from corresponding quarter of previous year</i>									
1981-82—									
September	+10.1	+7.2	+10.4	+9.1	+9.8	+8.1	+4.9	..	+9.0
December	+8.9	+7.7	+10.9	+10.6	+12.6	+8.9	+29.2	..	+11.2
March	+7.7	+7.1	+11.1	+10.3	+10.0	+9.4	+30.2	..	+10.6
June	+7.7	+6.5	+11.7	+12.1	+9.0	+10.1	+32.1	..	+10.7
1982-83—									
September	+7.1	+6.8	+11.7	+12.9	+15.0	+11.6	+39.1	..	+12.3
December	+8.0	+6.4	+11.5	+13.2	+11.5	+15.2	+17.9	..	+11.0
<i>Change from previous quarter</i>									
1980-81—									
December	+2.8	+2.3	+2.6	+2.1	+1.9	+1.0	+1.1	..	+2.1
March	+2.0	+1.0	+2.1	+2.8	+3.6	+2.1	+1.6	..	+2.3
June	+1.5	+3.0	+2.8	+1.6	+4.0	+1.6	+1.0	..	+2.3
1981-82—									
September	+3.5	+0.8	+2.5	+2.3	+0.1	+3.1	+1.1	..	+2.0
December	+1.6	+2.7	+3.1	+3.5	+4.5	+1.8	+24.6	..	+4.2
March	+0.9	+0.5	+2.3	+2.6	+1.2	+2.6	+2.3	..	+1.7
June	+1.5	+2.4	+3.3	+3.2	+3.1	+2.3	+2.5	+1.2	+2.4
1982-83—									
September	+3.0	+1.1	+2.6	+3.0	+5.6	+4.5	+6.4	+2.1	+3.5
December	+2.5	+2.2	+2.9	+3.8	+1.3	+5.1	+5.7	+2.3	+3.0

(a) Series includes effects of price changes in hospital and medical services; see paragraph 13.

**TABLE 5. CONSUMER PRICE INDEX :  
COMPARISON OF 'ALL GROUPS EXCLUDING HOSPITAL AND MEDICAL SERVICES' AND ALL GROUPS INDEX :  
WEIGHTED AVERAGE OF EIGHT CAPITAL CITIES : PERCENTAGE CHANGES**

	<i>Change from previous quarter</i>		<i>Change from corresponding quarter of previous year</i>	
	<i>All Groups excluding hospital and medical services</i>	<i>All Groups</i>	<i>All Groups excluding hospital and medical services</i>	<i>All Groups</i>
	%	%	%	%
1980-81—				
December	+2.1	+2.1	..	..
March	+2.4	+2.3	..	..
June	+2.3	+2.3	..	..
1981-82—				
September	+2.2	+2.0	+9.3	+9.0
December	+2.9	+4.2	+10.2	+11.2
March	+1.7	+1.7	+9.4	+10.6
June	+2.4	+2.4	+9.6	+10.7
1982-83—				
September	+3.3	+3.5	+10.7	+12.3
December	+2.7	+3.0	+10.5	+11.0

TABLE 6.  
CONSUMER PRICE INDEX—GROUP INDEXES

Quarter	Sydney	Melbourne	Brisbane	Adelaide	Perth	Hobart	Canberra	Darwin	Weighted average of eight capital cities
<b>FOOD</b> (Base of each index : Year 1980-81 = 100.0)									
1980-81—									
December	99.4	99.6	99.1	98.6	98.9	99.4	99.4	98.4	99.3
March	101.3	101.1	101.8	101.7	101.1	100.6	101.2	101.5	101.3
June	103.0	102.1	103.7	102.9	102.8	102.7	102.7	104.1	102.8
1981-82—									
September	105.1	107.1	106.5	106.6	109.0	106.1	105.6	107.4	106.4
December	107.6	107.9	108.7	108.0	109.9	108.9	107.5	110.5	108.1
March	108.8	108.7	110.3	109.2	109.9	108.9	108.3	111.5	109.1
June	110.1	110.8	111.2	111.4	112.1	110.8	109.2	111.9	110.7
1982-83—									
September	113.0	114.5	114.2	114.5	115.7	114.5	112.5	114.1	114.0
December	115.2	117.4	118.1	117.1	118.9	117.5	115.9	117.8	116.8
<b>CLOTHING</b> (Base of each index : Year 1980-81 = 100.0)									
1980-81—									
December	99.3	99.3	99.1	99.2	99.4	99.2	99.2	99.3	99.3
March	100.5	100.3	100.5	100.1	100.2	100.1	99.7	100.2	100.3
June	103.0	103.3	103.0	103.7	103.5	103.5	104.1	101.9	103.3
1981-82—									
September	103.9	104.2	103.9	104.5	104.0	104.1	105.1	104.6	104.1
December	106.7	106.6	107.9	107.5	106.6	106.0	107.3	107.8	106.9
March	106.8	107.2	109.3	107.8	107.6	106.5	108.2	110.5	107.4
June	109.9	109.5	111.6	110.3	110.4	109.1	109.5	111.9	110.0
1982-83—									
September	111.2	110.8	113.3	111.6	110.3	110.3	111.6	112.5	111.2
December	113.6	113.1	115.5	114.3	113.6	111.9	113.5	115.3	113.7
<b>HOUSING</b> (Base of each index : Year 1980-81 = 100.0)									
1980-81—									
December	98.7	98.8	98.7	99.4	100.0	99.9	98.9	100.0	98.9
March	101.0	100.9	101.1	100.7	101.4	101.1	100.5	101.7	101.0
June	104.1	104.0	103.2	103.0	102.6	102.3	104.5	103.4	103.8
1981-82—									
September	106.6	106.7	107.5	104.8	105.1	103.9	106.9	104.0	106.4
December	109.5	109.8	110.9	109.3	108.6	106.7	110.9	112.1	109.7
March	112.1	112.2	115.1	111.8	110.0	108.1	113.2	114.6	112.2
June	116.0	116.2	118.5	114.5	112.5	111.0	118.5	116.0	115.9
1982-83—									
September	118.9	118.9	123.7	117.8	114.9	112.5	120.7	122.8	118.9
December	121.3	122.5	127.8	122.8	118.9	116.6	123.6	125.5	122.3
<b>HOUSEHOLD EQUIPMENT AND OPERATION</b> (Base of each index : Year 1980-81 = 100.0)									
1980-81—									
December	98.3	98.6	99.5	99.5	99.4	98.7	98.8	98.9	98.7
March	101.7	101.7	101.0	101.1	101.1	101.7	102.0	101.1	101.5
June	103.7	103.0	102.4	102.6	101.9	102.4	103.0	103.4	103.1
1981-82—									
September	105.4	105.4	105.5	106.7	105.2	104.5	104.6	105.2	105.5
December	109.0	109.5	109.6	109.7	108.8	108.7	108.1	110.0	109.2
March	111.7	113.2	110.9	111.8	110.3	112.4	110.9	110.9	112.0
June	116.8	115.4	114.9	115.3	113.7	114.2	114.0	115.1	115.6
1982-83—									
September	121.2	117.7	118.2	118.5	117.5	116.5	118.0	119.3	119.1
December	126.0	123.0	121.5	122.7	120.3	119.9	123.9	121.7	123.6



TABLE 6.  
CONSUMER PRICE INDEX—GROUP INDEXES—*continued*

Quarter	Sydney	Melbourne	Brisbane	Adelaide	Perth	Hobart	Canberra	Darwin	Weighted average of eight capital cities
<b>TRANSPORTATION</b> (Base of each index : Year 1980-81 = 100.0)									
1980-81—									
December	98.4	97.1	98.0	96.5	97.8	97.0	98.3	99.7	97.7
March	101.4	101.4	99.6	101.9	101.0	101.1	100.1	100.2	101.2
June	104.3	105.4	106.1	107.1	105.2	105.5	105.0	102.2	105.2
1981-82—									
September	104.3	104.3	105.9	106.6	108.6	109.3	107.2	103.6	105.3
December	109.6	108.9	112.1	110.3	111.7	111.4	111.0	107.5	110.0
March	111.6	108.4	116.0	111.8	112.5	114.1	112.3	109.7	111.3
June	115.5	112.9	114.9	116.2	114.9	116.4	119.0	112.6	114.7
1982-83—									
September	123.4	119.0	121.4	120.1	120.7	121.9	123.5	116.2	121.1
December	126.1	118.4	123.5	122.5	122.0	125.2	128.0	118.3	122.7
<b>TOBACCO AND ALCOHOL</b> (Base of each index : Year 1980-81 = 100.0)									
1980-81—									
December	98.2	99.3	99.2	98.8	98.8	98.5	99.5	99.1	98.8
March	101.8	100.1	100.3	100.6	100.1	100.7	101.3	100.9	100.9
June	102.7	102.0	102.2	101.8	103.4	103.0	102.3	102.2	102.5
1981-82—									
September	106.2	105.1	106.0	105.4	106.0	105.0	104.7	104.1	105.7
December	107.8	107.1	108.6	106.3	108.2	110.0	106.3	109.5	107.6
March	111.2	109.6	110.1	110.1	110.2	109.9	110.4	111.2	110.4
June	114.5	111.3	113.1	112.0	111.9	111.6	113.0	116.7	112.9
1982-83—									
September	120.1	115.5	118.2	117.5	117.4	118.0	117.6	122.0	118.0
December	126.6	121.4	123.5	122.8	123.2	124.3	123.5	127.6	124.0
<b>HEALTH AND PERSONAL CARE</b> (Base of each index : Year 1980-81 = 100.0)									
1980-81—									
December	98.8	100.0	99.5	98.9	98.2	99.8	99.6	99.8	99.2
March	101.0	100.9	101.6	101.1	98.5	101.3	101.1	100.7	100.8
June	102.3	101.8	102.5	102.3	98.6	102.7	102.1	101.8	101.8
1981-82—									
September	103.0	103.0	103.8	103.6	100.3	103.6	102.7	103.3	102.9
December	123.2	135.1	115.2	126.2	139.2	124.5	128.1	145.7	128.2
March	127.7	137.6	117.5	127.9	141.3	126.3	129.9	147.1	131.2
June	133.3	139.0	119.9	129.2	142.9	127.6	136.5	149.4	134.5
1982-83—									
September	137.9	152.1	120.8	147.3	154.4	134.4	141.2	155.6	143.1
December	150.0	155.8	132.5	149.7	159.5	144.2	153.1	162.3	151.2
<b>RECREATION AND EDUCATION</b> (Base of each index : March quarter 1982 = 100.0)									
1981-82—									
March	100.0	100.0	100.0	100.0	100.0	100.0	100.0	100.0	100.0
June	100.9	102.0	100.5	101.0	100.3	101.7	101.5	100.1	101.2
1982-83—									
September	102.9	104.1	103.3	103.3	101.9	103.5	104.6	102.7	103.3
December	104.9	106.9	105.7	104.8	104.3	107.8	107.7	105.2	105.7

TABLE 7. CONSUMER PRICE INDEX—INDEX NUMBERS AND INDEX POINTS CONTRIBUTIONS AND INDEX POINTS CONTRIBUTIONS : WEIGHTED AVERAGE OF EIGHT CAPITAL CITIES

	Index numbers (Base of each index: Year 1980-81 = 100.0)				Change between				Contribution to total CPI (expressed as All Groups index points)					
	Dec. qtr 1981		Sept. qtr 1982		Sept. qtr 1982		Dec. qtr 1981		Sept. qtr 1982		Dec. qtr 1982		Change between Sept. qtr 1982 and Dec. qtr 1982	
	Dec. qtr 1981	Sept. qtr 1982	Dec. qtr 1982	%	Sept. qtr 1982	Dec. qtr 1982	%	Sept. qtr 1982	Dec. qtr 1982	%	Sept. qtr 1982	Dec. qtr 1982	%	Sept. qtr 1982
<b>FOOD</b>	108.1	114.0	116.8		+2.5	+8.0		24.87	25.48		2.46	+0.61		
Dairy produce	111.4	123.6	126.7		+2.5	+13.7		2.40	2.46		+0.06	+0.06		
Cereal products	109.8	121.0	123.5		+2.1	+12.5		2.66	2.72		+0.06	+0.11		
Meat and seafoods	102.2	104.6	106.6		+1.9	+4.3		5.66	5.77					
Beef and veal	99.7	100.6	102.9		+2.3	+3.2		2.27			2.32			+0.05
Lamb and mutton	99.2	99.1	100.2		+1.1	+1.0		0.84			0.85			+0.01
Pork	110.8	118.7	120.2		+1.3	+8.5		0.27			0.28			+0.01
Poultry	110.9	115.3	114.7		-0.5	+3.4		0.71			0.70			-0.01
Other meat	107.4	114.7	116.4		+1.5	+8.4		1.09			1.11			+0.02
Fish	101.3	103.0	109.2		+6.0	+7.8		0.48			0.51			+0.03
Fresh fruit and vegetables	116.9	108.4	109.8		+1.3	-6.1		1.96	1.98			+0.02		
Processed fruit and vegetables	109.2	117.5	122.8		+4.5	+12.5		1.04	1.09			+0.05		
Soft drinks, ice cream and confectionery	113.0	123.2	128.1		+4.0	+13.4		3.25	3.38			+0.13		
Meals out and take-away food	108.5	117.4	120.2		+2.4	+10.8		5.44	5.57			+0.13		
Other food	104.9	111.5	114.0		+2.2	+8.7		2.46	2.51			+0.05		
<b>CLOTHING</b>	106.9	111.2	113.7		+2.2	+6.4		9.06	9.26			+0.20		
Men's and boys' clothing	107.3	111.7	114.7		+2.7	+6.9		2.74	2.81			+0.07		
Women's and girls' clothing	106.7	108.8	110.6		+1.7	+3.7		3.72	3.78			+0.06		
Piecegoods and other clothing	105.2	112.9	116.8		+3.5	+11.0		0.54	0.55			+0.01		
Footwear	106.0	112.2	114.6		+2.1	+8.1		1.57	1.60			+0.03		
Clothing and footwear services	110.4	123.3	125.8		+2.0	+13.9		0.50	0.51			+0.01		
<b>HOUSING</b>	109.7	118.9	122.3		+2.9	+11.5		16.01	16.45			+0.44		
Rent	108.3	119.0	121.6		+2.2	+12.3		5.02	5.14			+0.12		
Privately-owned dwelling rents	108.0	117.5	120.0		+2.1	+11.1					4.49			+0.09
Government-owned dwelling rents	109.8	129.4	133.8		+3.4	+21.9		10.98	11.32		0.65			+0.02
Home ownership(a)	110.5	119.2	122.8		+3.0	+11.1								
Local government rates and charges	113.1	119.8	129.1		+7.8	+14.1					2.37			+0.17
Other home ownership	109.8	119.0	121.3		+1.9	+10.5		2.20	2.20		8.94			+0.16
<b>HOUSEHOLD EQUIPMENT AND OPERATION</b>	109.2	119.1	123.6		+3.8	+13.2		16.20	16.81			+0.61		
Fuel and light	111.8	133.7	143.1		+7.0	+28.0		3.24	3.47			+0.23		
Furniture and floor coverings	107.2	116.7	120.4		+3.2	+12.3		2.87	2.96			+0.09		
Appliances	105.7	109.9	110.2		+0.3	+4.3		1.88	1.89			+0.01		
Drapery	107.1	110.7	112.8		+1.9	+5.3		1.03	1.05			+0.02		
Household utensils and tools	109.6	114.3	118.9		+4.0	+8.5		1.62	1.69			+0.07		
Household supplies and services	112.4	121.4	126.0		+3.8	+12.1		4.04	4.19			+0.15		
Postal and telephone services	106.4	114.4	118.9		+3.9	+11.7		1.52	1.58			+0.06		
<b>TRANSPORTATION</b>	110.0	121.1	122.7		+1.3	+11.5		19.93	20.18			+0.25		
Private motoring	109.2	120.6	121.7		+0.9	+11.4		18.28	18.46			+0.18		
Motor vehicle purchase	109.9	116.2	116.8		+0.5	+6.3		4.98	5.01		5.01			+0.03
Automotive fuel	109.4	123.9	124.1		+0.2	+13.4		5.92	5.93			+0.01		
Other motoring costs	108.6	121.1	123.3		+1.8	+13.5		7.39	7.53			+0.14		
Urban transport fares	115.4	123.5	129.4		+4.8	+12.1		1.65	1.72			+0.07		

For footnotes see page 9.

TABLE 7. CONSUMER PRICE INDEX—INDEX NUMBERS AND INDEX POINTS CONTRIBUTIONS : WEIGHTED AVERAGE OF EIGHT CAPITAL CITIES—continued

	Index numbers (Base of each index: Year 1980-81 = 100.0)				Change between				Contribution to total CPI (expressed as All Groups index points)						
	1981		1982		1982		and		1982		1982		and		
	Dec. qtr	Sept. qtr	Dec. qtr	Sept. qtr	Dec. qtr	Sept. qtr	Dec. qtr	Sept. qtr	Dec. qtr	Sept. qtr	Dec. qtr	Sept. qtr	Dec. qtr	Sept. qtr	Dec. qtr
<b>TOBACCO AND ALCOHOL</b>	107.6	118.0	124.0	118.0	+5.1	+15.2	10.10	10.62	7.52	4.99	5.26	10.62	7.52	+0.52	+0.32
Alcoholic beverages	107.5	117.8	123.0	117.8	+4.4	+14.4	7.20	7.52	4.99	5.26	2.21	7.52	4.99	+0.27	+0.04
Beer	108.6	119.6	126.1	119.6	+5.4	+16.1									
Wine and spirits	105.0	113.9	116.1	113.9	+1.9	+10.6									
Cigarettes and tobacco	107.9	118.6	126.8	118.6	+6.9	+17.5	2.90	3.11	2.21	2.25		3.11	2.21	+0.21	
<b>HEALTH AND PERSONAL CARE</b>	128.2	143.1	151.2	143.1	+5.7	+17.9	9.15	9.66	6.29	5.89	6.29	9.66	6.29	+0.51	+0.40
Health services	143.6	162.3	173.5	162.3	+6.9	+20.8	5.89	6.29	5.89	2.54	2.54	6.29	5.89	+0.09	+0.01
Personal care products	107.3	116.6	121.3	116.6	+4.0	+13.0	2.45	2.54	2.45	0.82	0.82	2.54	2.45		
Personal care services	109.1	121.3	122.6	121.3	+1.1	+12.4	0.82	0.82	0.82			0.82	0.82		
<b>RECREATION AND EDUCATION(b)(e)</b>	103.3	103.3	105.7	103.3	+2.3	..	13.19	13.49	13.49	13.49	13.49	13.49	13.49	+0.30	+0.05
Books, newspapers, magazines	116.7	128.0	131.1	128.0	+2.4	+12.3	1.85	1.90	1.85	3.00	3.00	1.90	1.85	+0.05	-0.03
Other recreational goods	104.5	107.3	106.2	107.3	-1.0	+1.6	3.03	3.00	3.03	4.06	4.06	3.00	3.00	+0.20	+0.07
Holiday travel and accommodation(c)(e)	109.5	100.4	105.4	100.4	+5.0	..	2.80	2.87	2.87	1.45	1.46	2.87	2.87	+0.01	+0.01
Other recreational services	..	123.5	126.6	123.5	+2.5	+15.6	1.45	1.46	1.45			1.46	1.46		
Education and child care(d)(e)	..	102.3	103.2	102.3	+0.9	..									
<b>ALL GROUPS</b>	109.9	118.5	122.0	118.5	+3.0	+11.0	118.5	122.0	118.5	122.0	122.0	122.0	122.0	+3.5	+3.5
<b>SPECIAL SERIES</b>															
All groups, excluding food group	110.5	119.8	123.5	119.8	+3.1	+11.8	93.64	96.49	96.49	96.49	96.49	96.49	96.49	+2.85	+3.02
All groups, excluding housing group	110.0	118.4	121.9	118.4	+3.0	+10.8	102.50	105.52	105.52	105.52	105.52	105.52	105.52	+3.06	+3.06
All groups, excluding hospital and medical services	108.8	117.0	120.2	117.0	+2.7	+10.5	113.16	116.22	116.22	116.22	116.22	116.22	116.22	+2.14	+2.14
All groups, goods component(f)	108.4	116.1	119.1	116.1	+2.6	+9.9	83.63	85.77	85.77	85.77	85.77	85.77	85.77	+1.31	+1.31
All groups, services component(g)	114.7	125.5	130.3	125.5	+3.8	+13.6	34.88	36.19	36.19	36.19	36.19	36.19	36.19	+0.47	+0.47
Selected State and local government charges(h)	126.7	144.5	152.0	144.5	+5.2	+20.0	9.11	9.58	9.58	9.58	9.58	9.58	9.58		
All groups, excluding selected State and local government charges(h)	108.8	116.7	119.9	116.7	+2.7	+10.2	109.40	112.39	112.39	112.39	112.39	112.39	112.39	+2.99	+2.99

(a) Does not include cost of land and interest charges on house purchase. (b) New group index replacing former Recreation group. (c) New subgroup index replacing former holiday accommodation subgroup. (d) New subgroup. (e) Base: March quarter 1982 = 100.0. (f) The special series 'All groups, goods component' comprises: the Food group (except meals out); Clothing group (except clothing and footwear services); Household equipment and operation group (except contents insurance, repairs to appliances and postal and telephone services); Tobacco and alcohol group; house purchase; house repairs and maintenance-goods; motor vehicle purchase; automotive fuel; tyres and tubes; vehicle service and repairs-goods; personal care products; books, newspapers and magazines; and other recreational goods. (g) The 'All groups, services component' comprises all items not included in the 'All groups, goods component'. (h) Selected State and local government charges comprise: government-owned dwelling rents; water and sewerage rates; council property rates and charges; electricity prices; gas prices (Melbourne and Perth only); motor vehicle third party insurance premiums (except Canberra); motor vehicle registration fees; drivers' licence fees; urban bus fares (government fares only in Sydney and Melbourne, council fares only in Brisbane); urban rail and tram fares (not applicable in Hobart, Canberra and Darwin); and public hospital charges (not applicable in Brisbane).

## APPENDIX

### CONSUMER PRICE INDEX: IMPACT OF CHANGES IN STATE AND LOCAL GOVERNMENT CHARGES

#### Introduction

In view of the considerable interest recently expressed in the impact of changes in State and local government charges on the CPI, it has been decided to incorporate this information in the quarterly publication from now on. Tables 3 and 7 of this issue have, accordingly, been expanded to include the additional statistics.

2. This Appendix explains how these figures have been derived and provides corresponding information for past periods.

#### Scope of the statistics

3. The figures in Tables 3 and 7 and in the following tables cover those State and local government charges which are paid directly by consumers. There are, of course, other goods and services in the CPI whose prices are affected by government charges or taxes. However, these prices are also influenced by other factors such as changes in costs and profit margins and the information is not available to enable the effects on prices of these different factors to be calculated separately. Thus, it is not possible to provide an estimate of the overall impact on the CPI of all State and local government charges and taxes.

4. In respect of public hospital charges it should be noted that these had no direct effect on the CPI prior to September 1981. For CPI purposes it was assumed that, under the health financing arrangements in force prior to that date, the net cost of hospital services for both insured and uninsured persons in the CPI population group was zero—i.e. insured persons were covered for the full cost of the service, while uninsured persons received free treatment. From December quarter 1981, while the net cost of hospital treatment for insured persons continued to be zero, uninsured persons have been liable to meet the cost of hospital services. The indirect effect of hospital charges on the CPI through their impact on health insurance charges is not included in these figures. This effect cannot be quantified because premium rates are determined by other factors in addition to hospital charges.

#### Comparability between cities

5. There are differences in the range of services provided in the different cities and some services which are provided by State government authorities in some cities are provided by local government authorities or by private companies in other cities. Water and sewerage services, for example, are provided by State government

authorities in some cities and by local government authorities in others; and private companies are involved in the provision of urban bus services in a number of capital cities.

6. In order to provide figures that are broadly comparable for all eight capital cities the selected list of charges includes those levied by State government departments and authorities and by local government authorities.

7. The following tables show the effect on the CPI, for each capital city and for the weighted average of the eight capital cities, of changes in the charges listed at the foot of each table. In interpreting the figures the following points should be kept in mind:

- (a) *Water and sewerage.* In Brisbane and Hobart these services are provided by local government authorities.
- (b) *Gas.* In Sydney, Brisbane, Adelaide, Hobart and Canberra, gas is supplied by private companies and is not included in the calculations for these cities. For Perth, the calculations take account of the impact on the CPI only of changes in the price of gas supplied by the State Energy Commission (weighted according to its proportionate importance in total gas consumption). Gas prices are not included in the CPI for Darwin.
- (c) *Third party insurance.* For Brisbane, only the impact on the CPI of changes to SGIO premiums (weighted according to their proportionate share of total third party insurance) are included in the calculations. In Canberra, third party insurance is provided by a private company and is excluded from the calculations.
- (d) *Urban bus services.* In Sydney, Melbourne and Brisbane some bus services are provided by private companies. These are excluded from the calculations and, in these cities, only the impact on the CPI of changes in bus fares charged for government or City Council bus services (weighted according to their proportionate share of total bus transport) are included.
- (e) *Urban rail and tram services.* These are not applicable to Hobart, Canberra or Darwin.
- (f) *Public hospital charges.* These are not applicable to Brisbane.

**CONSUMER PRICE INDEX: IMPACT OF CHANGES IN SELECTED STATE AND LOCAL  
GOVERNMENT CHARGES**

<i>Quarter</i>	<i>All Groups Index number</i>	<i>Percentage change in All Groups Index</i>	<i>Percentage points contribution of selected items</i>	<i>Contribution of selected items as a proportion of total change</i>
<b>SYDNEY(a)</b>				
<i>1980-81—</i>				
September	96.6	+1.8	+0.05	2.8%
December	98.7	+2.2	+0.28	12.7%
March	101.3	+2.6	+0.36	13.8%
June	103.3	+2.0	+0.19	9.5%
<i>1981-82—</i>				
September	105.1	+1.7	+0.08	4.7%
December	109.4	+4.1	+0.92	22.4%
March	111.5	+1.9	+0.43	22.6%
June	114.6	+2.8	+0.48	17.1%
<i>1982-83—</i>				
September	118.7	+3.6	+0.59	16.4%
December	122.4	+3.1	+0.49	15.7%

(a) For Sydney the selected charges comprise: government-owned dwelling rents; water and sewerage rates; council property rates and charges; electricity prices; motor vehicle third party insurance premiums; motor vehicle registration fees; drivers' licence fees; government bus fares; urban rail fares; and public hospital charges.

<b>MELBOURNE(a)</b>				
<i>1980-81—</i>				
September	96.8	+2.0	+0.38	19.0%
December	98.8	+2.1	+0.08	3.8%
March	101.0	+2.2	+0.23	10.5%
June	103.3	+2.3	+0.12	5.2%
<i>1981-82—</i>				
September	105.5	+2.1	+0.07	3.3%
December	110.1	+4.4	+1.59	36.1%
March	111.6	+1.4	+0.41	29.3%
June	114.3	+2.4	+0.11	4.6%
<i>1982-83—</i>				
September	118.3	+3.5	+0.22	6.3%
December	121.3	+2.5	+0.39	15.7%

(a) For Melbourne the selected charges comprise: government-owned dwelling rents; water and sewerage rates; council property rates and charges; electricity prices; gas prices; motor vehicle third party insurance premiums; motor vehicle registration fees; drivers' licence fees; government bus fares; urban rail and tram fares; and public hospital charges.

<b>BRISBANE(a)</b>				
<i>1980-81—</i>				
September	96.6	+1.7	+0.42	24.7%
December	98.8	+2.3	+0.17	7.4%
March	100.9	+2.1	+0.09	4.3%
June	103.6	+2.7	—	—
<i>1981-82—</i>				
September	106.0	+2.3	+0.36	15.7%
December	110.1	+3.9	+0.70	17.9%
March	112.5	+2.2	+0.16	7.3%
June	114.1	+1.4	+0.08	5.7%
<i>1982-83—</i>				
September	118.0	+3.4	+0.55	16.2%
December	121.9	+3.3	+0.22	6.7%

(a) For Brisbane the selected charges comprise: government-owned dwelling rents; water and sewerage rates; council property rates and charges; electricity prices; motor vehicle third party insurance premiums (SGIO); motor vehicle registration fees; drivers' licence fees; urban bus fares (Brisbane City Council); and urban rail fares.

**CONSUMER PRICE INDEX: IMPACT OF CHANGES IN SELECTED STATE AND LOCAL  
GOVERNMENT CHARGES—continued**

<i>Quarter</i>	<i>All Groups Index number</i>	<i>Percentage change in All Groups Index</i>	<i>Percentage points contribution of selected items</i>	<i>Contribution of selected items as a proportion of total change</i>
<b>ADELAIDE(a)</b>				
<i>1980-81—</i>				
September	96.6	+1.4	+0.18	12.9%
December	98.5	+2.0	+0.33	16.5%
March	101.2	+2.7	—	—
June	103.7	+2.5	+0.15	6.0%
<i>1981-82—</i>				
September	105.8	+2.0	+0.47	23.5%
December	110.0	+4.0	+1.47	36.8%
March	111.7	+1.5	—	—
June	114.4	+2.4	+0.12	5.0%
<i>1982-83—</i>				
September	118.6	+3.7	+0.38	10.3%
December	121.8	+2.7	+0.41	15.3%

(a) For Adelaide the selected charges comprise: government-owned dwelling rents; water and sewerage rates; council property rates and charges; electricity prices; motor vehicle third party insurance premiums; motor vehicle registration fees; drivers' licence fees; urban bus fares; urban rail fares; and public hospital charges.

<b>PERTH(a)</b>				
<i>1980-81—</i>				
September	97.4	+2.3	+0.66	28.7%
December	98.8	+1.4	+0.32	22.9%
March	100.8	+2.0	+0.03	1.5%
June	103.0	+2.2	—	—
<i>1981-82—</i>				
September	106.5	+3.4	+0.57	16.8%
December	111.2	+4.4	+1.51	34.3%
March	112.4	+1.1	—	—
June	114.6	+2.0	—	—
<i>1982-83—</i>				
September	118.6	+3.5	+0.72	20.6%
December	121.8	+2.7	+0.21	7.8%

(a) For Perth the selected charges comprise: government-owned dwelling rents; water and sewerage rates; council property rates and charges; electricity prices; SEC gas prices; motor vehicle third party insurance premiums; motor vehicle registration fees; drivers' licence fees; urban bus fares; urban rail fares; and public hospital charges.

<b>HOBART(a)</b>				
<i>1980-81—</i>				
September	97.0	+2.3	+0.32	13.9%
December	98.7	+1.8	+0.21	11.7%
March	101.0	+2.3	+0.51	22.2%
June	103.2	+2.2	—	—
<i>1981-82—</i>				
September	105.7	+2.4	+0.38	15.8%
December	109.7	+3.8	+0.82	21.6%
March	111.3	+1.5	+0.22	14.7%
June	113.4	+1.9	—	—
<i>1982-83—</i>				
September	116.9	+3.1	+0.19	6.1%
December	121.0	+3.5	+0.44	12.7%

(a) For Hobart the selected charges comprise: government-owned dwelling rents; water and sewerage rates; council property rates and charges; electricity prices; motor vehicle third party insurance premiums; motor vehicle registration fees; drivers' licence fees; urban bus fares; and public hospital charges.

**CONSUMER PRICE INDEX: IMPACT OF CHANGES IN SELECTED STATE AND LOCAL  
GOVERNMENT CHARGES—continued**

<i>Quarter</i>	<i>All Groups Index number</i>	<i>Percentage change in All Groups Index</i>	<i>Percentage points contribution of selected items</i>	<i>Contribution of selected items as a proportion of total change</i>
<b>CANBERRA(a)</b>				
<i>1980-81—</i>				
September	96.6	+1.9	—	—
December	98.9	+2.4	+0.18	7.5%
March	100.9	+2.0	+0.21	10.5%
June	103.6	+2.7	+0.20	7.4%
<i>1981-82—</i>				
September	105.7	+2.0	+0.10	5.0%
December	110.0	+4.1	+1.05	25.6%
March	111.8	+1.6	+0.27	16.9%
June	115.2	+3.0	+0.43	14.3%
<i>1982-83—</i>				
September	118.7	+3.0	+0.42	14.0%
December	123.3	+3.9	+0.72	18.5%

(a) For Canberra the selected charges comprise: government-owned dwelling rents; water and sewerage rates; property rates and charges; electricity prices; motor vehicle registration fees; drivers' licence fees; urban bus fares; and public hospital charges.

<b>DARWIN(a)</b>				
<i>1980-81—</i>				
September	96.9	(b) .	(b) .	(b) .
December	99.2	+2.4	+0.67	27.9%
March	101.0	+1.8	+0.02	1.1%
June	102.9	+1.9	+0.02	1.1%
<i>1981-82—</i>				
September	105.0	+2.0	-0.06	-3.0%
December	111.3	+6.0	+2.78	46.3%
March	113.0	+1.5	+0.02	1.3%
June	115.0	+1.8	+0.22	12.2%
<i>1982-83—</i>				
September	118.8	+3.3	+0.85	25.8%
December	122.1	+2.8	+0.18	6.4%

(a) For Darwin the selected charges comprise: government-owned dwelling rents; water and sewerage rates; council property rates and charges; electricity prices; motor vehicle third party insurance premiums; motor vehicle registration fees; drivers' licence fees; urban bus fares; and public hospital charges.

(b) Not available as no index compiled for Darwin, June quarter 1980.

<b>WEIGHTED AVERAGE OF EIGHT CAPITAL CITIES(a)</b>				
<i>1980-81—</i>				
September	96.8	(b) .	(b) .	(b) .
December	98.8	+2.1	+0.21	10.0%
March	101.1	+2.3	+0.23	10.0%
June	103.4	+2.3	+0.12	5.2%
<i>1981-82—</i>				
September	105.5	+2.0	+0.19	9.5%
December	109.9	+4.2	+1.22	29.0%
March	111.8	+1.7	+0.30	17.6%
June	114.5	+2.4	+0.24	10.0%
<i>1982-83—</i>				
September	118.5	+3.5	+0.46	13.1%
December	122.0	+3.0	+0.40	13.4%

(a) The selected charges comprise: government-owned dwelling rents; water and sewerage rates; council property rates and charges; electricity prices; gas prices (Melbourne and Perth); motor vehicle third party insurance premiums (except Canberra); motor vehicle registration fees; drivers' licence fees; urban bus fares (government fares only in Sydney and Melbourne; Council fares only in Brisbane); urban rail and tram fares (not applicable in Hobart, Canberra and Darwin); and public hospital charges (not applicable in Brisbane).

(b) Not available as no index compiled for Darwin, June quarter 1980.

